

# RAJAMAHENDRI

## INSTITUTE OF ENGINEERING & TECHNOLOGY

AISHE ID:C-18113

NAAC DWV

CYCLE II



## 7 : INSTITUTIONAL VALUES AND BEST PRACTICES

**7.1 Institutional Values & Social Responsibilities**

**7.1.2 Institutional Facilities and Initiatives**

### 7.1.2(1) Geo- Tagged Photographs



Approved by AICTE, New Delhi, Government of AP & Affiliated to JNTUK, Kakinada, Accredited by NAAC and An ISO 9001:2015 Certified Institution

**Bhoopalapatnam, Rajamahendravararam, E.G. Dist, AP-533103**

 9121214413

 [www.rietrjy.co.in](http://www.rietrjy.co.in)

 [office@rietrjy.co.in](mailto:office@rietrjy.co.in)



# RAJAMAHENDRI INSTITUTE OF ENGINEERING & TECHNOLOGY

(Approved by AICTE, New Delhi, Affiliated to JNTUK, Kakinada, Accredited BY NAAC)

BHOOPALAPATNAM, RAJAMAHENDRAVARAM, E.G. Dist., AP, 533107.

eMail: [office@rietrjy.co.in](mailto:office@rietrjy.co.in) Website: [www.rietrjy.co.in](http://www.rietrjy.co.in) Ph: +91 91212 14413



Rajamahendravaram, Andhra Pradesh, India  
2R3W+79J, Pidimgoyya, Rajamahendravaram, Andhra Pradesh 533107, India  
Lat 17.002902°  
Long 81.846033°  
03/04/24 12:11 PM GMT +05:30

COLLEGE MAIN GATE

  
PRINCIPAL

PRINCIPAL  
RAJAMAHENDRI  
INSTITUTE OF ENGINEERING TECHNOLOGY  
BHOOPALAPATNAM.  
RAJAMAHENDRAVARAM-533 107. E.G. Dist.



# RAJAMAHENDRI

## INSTITUTE OF ENGINEERING & TECHNOLOGY

(Approved by AICTE, New Delhi, Affiliated to JNTUK, Kakinada, Accredited BY NAAC)

BHOOPALAPATNAM, RAJAMAHENDRAVARAM, E.G. Dist., AP, 533107.

eMail: [office@rietrjy.co.in](mailto:office@rietrjy.co.in) Website: [www.rietrjy.co.in](http://www.rietrjy.co.in) Ph: +91 91212 14413



### PADESTRIAN PATH WAYS

  
PRINCIPAL

PRINCIPAL  
RAJAMAHENDRI  
INSTITUTE OF ENGINEERING TECHNOLOGY  
BHOOPALAPATNAM.  
RAJAMAHENDRAVARAM-533 107. E.G.Dist.



# RAJAMAHENDRI

## INSTITUTE OF ENGINEERING & TECHNOLOGY

(Approved by AICTE, New Delhi, Affiliated to JNTUK, Kakinada, Accredited BY NAAC)

BHOOPALAPATNAM, RAJAMAHENDRAVARAM, E.G. Dist., AP, 533107.

eMail: [office@rietry.co.in](mailto:office@rietry.co.in) Website: [www.rietry.co.in](http://www.rietry.co.in) Ph: +91 91212 14413



Rajamahendravaram, Andhra Pradesh, India  
2R3W+79J, Pidimgoyya, Rajamahendravaram, Andhra Pradesh 533107, India  
Lat 17.003782°  
Long 81.846371°  
03/04/24 01:39 PM GMT +05:30

GPS Map Camera

### PADESTRIAN PATH WAYS

  
PRINCIPAL

PRINCIPAL  
RAJAMAHENDRI  
INSTITUTE OF ENGINEERING TECHNOLOGY  
BHOOPALAPATNAM.  
RAJAMAHENDRAVARAM-533 107. E.G.Dist.



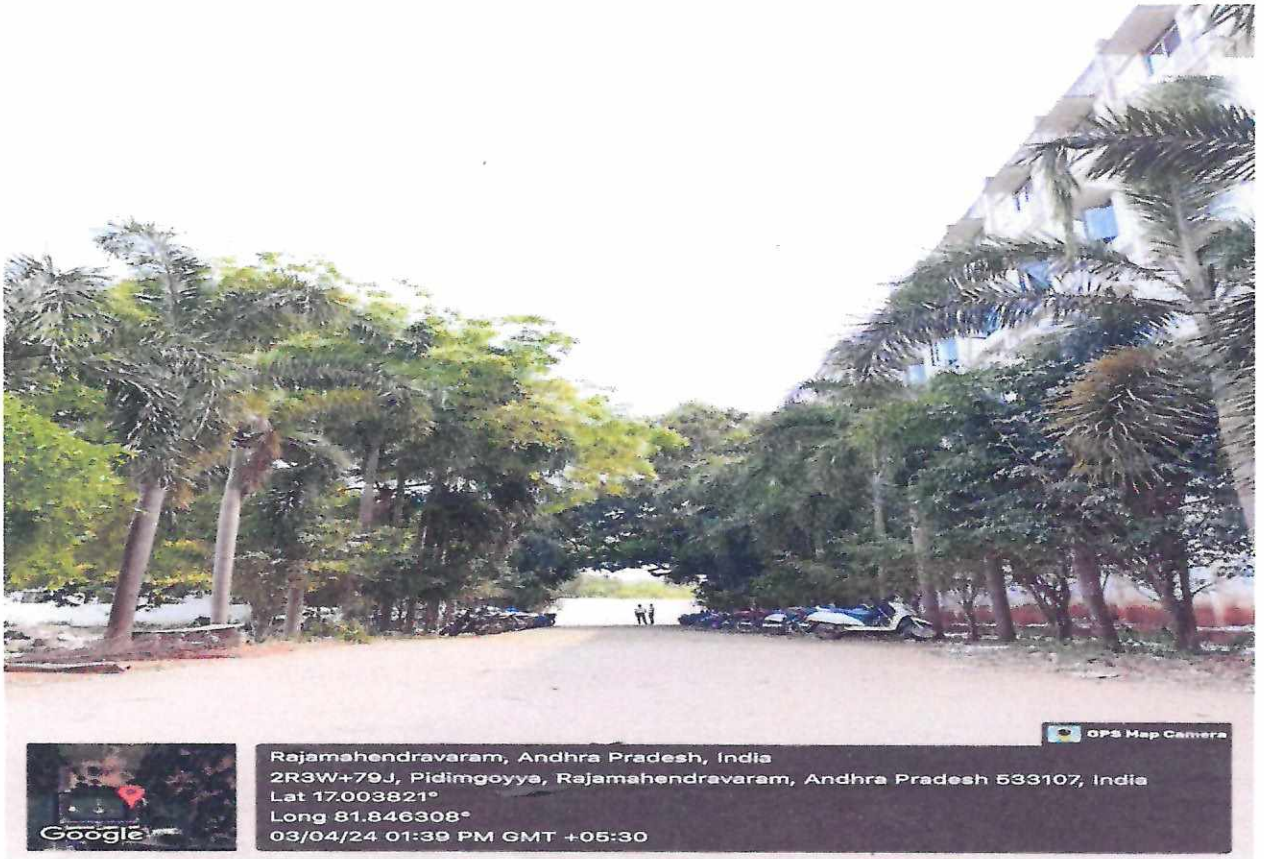
# RAJAMAHENDRI

## INSTITUTE OF ENGINEERING & TECHNOLOGY

(Approved by AICTE, New Delhi, Affiliated to JNTUK, Kakinada, Accredited BY NAAC)

BHOOPALAPATNAM, RAJAMAHENDRAVARAM, E.G. Dist., AP, 533107.


eMail: [office@rietrjy.co.in](mailto:office@rietrjy.co.in) Website: [www.rietrjy.co.in](http://www.rietrjy.co.in) Ph: +91 91212 14413



Rajamahendravaram, Andhra Pradesh, India  
2R3W+79J, Pidimgoyya, Rajamahendravaram, Andhra Pradesh 533107, India  
Lat 17.003821°  
Long 81.846308°  
03/04/24 01:39 PM GMT +05:30

OPS Map Camera

### PADESTRIAN PATH WAYS

  
**PRINCIPAL**  
**PRINCIPAL**  
**RAJAMAHENDRI**  
**INSTITUTE OF ENGINEERING TECHNOLOGY**  
**BHOOPALAPATNAM.**  
**RAJAMAHENDRAVARAM-533 107. E.G.Dist.**



# RAJAMAHENDRI

## INSTITUTE OF ENGINEERING & TECHNOLOGY

(Approved by AICTE, New Delhi, Affiliated to JNTUK, Kakinada, Accredited BY NAAC)

BHOOPALAPATNAM, RAJAMAHENDRAVARAM, E.G. Dist., AP, 533107.

eMail: [office@rietryj.co.in](mailto:office@rietryj.co.in) Website: [www.rietryj.co.in](http://www.rietryj.co.in) Ph: +91 91212 14413



Rajamahendravaram, Andhra Pradesh, India  
2R3W+79J, Pidimgoyya, Rajamahendravaram, Andhra Pradesh 533107, India  
Lat 17.00306°  
Long 81.846475°  
03/04/24 01:47 PM GMT +05:30

GPS Map Camera

### PADESTRIAN PATH WAYS

  
**PRINCIPAL**  
**PRINCIPAL**  
**RAJAMAHENDRI**  
**INSTITUTE OF ENGINEERING TECHNOLOGY**  
**BHOOPALAPATNAM.**  
**RAJAMAHENDRAVARAM-533 107. E.G.Dist.**



# RAJAMAHENDRI

## INSTITUTE OF ENGINEERING & TECHNOLOGY


(Approved by AICTE, New Delhi, Affiliated to JNTUK, Kakinada, Accredited BY NAAC)

BHOOPALAPATNAM, RAJAMAHENDRAVARAM, E.G. Dist., AP, 533107.

eMail: [office@rietjy.co.in](mailto:office@rietjy.co.in) Website: [www.rietjy.co.in](http://www.rietjy.co.in) Ph: +91 91212 14413



### RO WATER PLANT

  
**PRINCIPAL**  
**PRINCIPAL**  
**RAJAMAHENDRI**  
**INSTITUTE OF ENGINEERING TECHNOLOGY**  
**BHOOPALAPATNAM.**  
**RAJAMAHENDRAVARAM-533 107. E.G. Dist.**



# RAJAMAHENDRI

## INSTITUTE OF ENGINEERING & TECHNOLOGY

(Approved by AICTE, New Delhi, Affiliated to JNTUK, Kakinada, Accredited BY NAAC)

BHOOPALAPATNAM, RAJAMAHENDRAVARAM, E.G. Dist., AP, 533107.

eMail: office@rietrjy.co.in Website: www.rietrjy.co.in Ph: +91 91212 14413



### TRANSPORT FACILITY

  
PRINCIPAL

PRINCIPAL  
RAJAMAHENDRI  
INSTITUTE OF ENGINEERING TECHNOLOGY  
BHOOPALAPATNAM.  
RAJAMAHENDRAVARAM-533 107. E.G. Dist.





# RAJAMAHENDRI

## INSTITUTE OF ENGINEERING & TECHNOLOGY

(Approved by AICTE, New Delhi, Affiliated to JNTUK, Kakinada, Accredited BY NAAC)

BHOOPALAPATNAM, RAJAMAHENDRAVARAM, E.G. Dist., AP, 533107.

eMail: office@rietrjy.co.in Website: www.rietrjy.co.in Ph: +91 91212 14413



Rajamahendravaram, Andhra Pradesh, India  
2R3W+79J, Pidimgoyya, Rajamahendravaram, Andhra Pradesh 533107, India  
Lat 17.003076°  
Long 81.846482°  
03/04/24 01:42 PM GMT +05:30

GENERATOR

  
PRINCIPAL

PRINCIPAL  
RAJAMAHENDRI  
INSTITUTE OF ENGINEERING TECHNOLOGY  
BHOOPALAPATNAM.  
RAJAMAHENDRAVARAM-533 107. E.G. Dist.



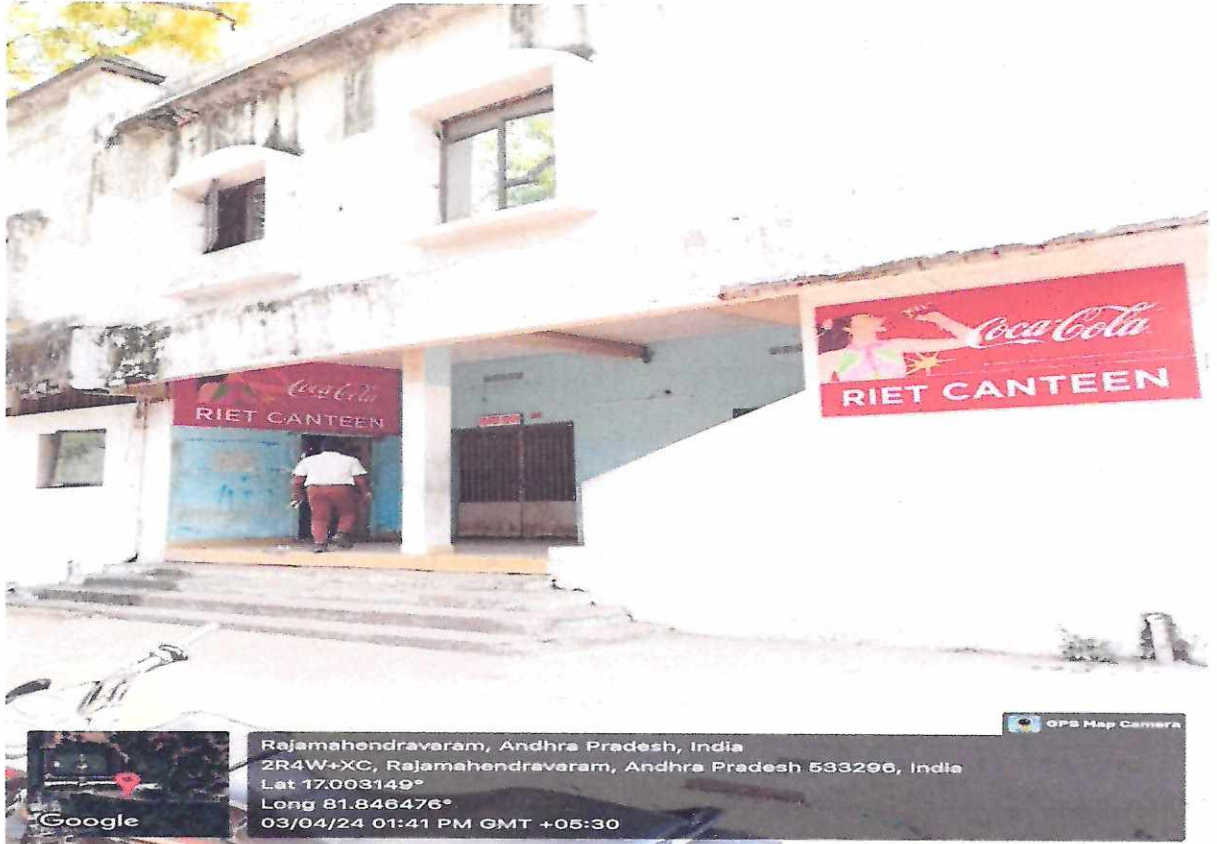
# RAJAMAHENDRI

## INSTITUTE OF ENGINEERING & TECHNOLOGY

(Approved by AICTE, New Delhi, Affiliated to JNTUK, Kakinada, Accredited BY NAAC)

BHOOPALAPATNAM, RAJAMAHENDRAVARAM, E.G. Dist., AP, 533107.

eMail: [office@rietrjy.co.in](mailto:office@rietrjy.co.in) Website: [www.rietrjy.co.in](http://www.rietrjy.co.in) Ph: +91 91212 14413



CANTEEN OUTSIDE

  
PRINCIPAL

PRINCIPAL  
RAJAMAHENDRI  
INSTITUTE OF ENGINEERING TECHNOLOGY  
BHOOPALAPATNAM.  
RAJAMAHENDRAVARAM-533 107. E.G. Dist.



# RAJAMAHENDRI

## INSTITUTE OF ENGINEERING & TECHNOLOGY


(Approved by AICTE, New Delhi, Affiliated to JNTUK, Kakinada, Accredited BY NAAC)

BHOOPALAPATNAM, RAJAMAHENDRAVARAM, E.G. Dist., AP, 533107.

eMail: [office@rietrjy.co.in](mailto:office@rietrjy.co.in) Website: [www.rietrjy.co.in](http://www.rietrjy.co.in) Ph: +91 91212 14413



CANTEEN INSIDE

  
**PRINCIPAL**  
PRINCIPAL  
RAJAMAHENDRI  
INSTITUTE OF ENGINEERING TECHNOLOGY  
BHOOPALAPATNAM.  
RAJAMAHENDRAVARAM-533 107. E.G. Dist.



**WATER RESOURCE (GROUND WATER)**

  
**PRINCIPAL**

**PRINCIPAL**  
**RAJAMAHENDRI**  
**INSTITUTE OF ENGINEERING TECHNOLOGY**  
**BHOOPALAPATNAM.**  
RAJAMAHENDRAVARAM-533 107. E.G.Dist.



# RAJAMAHENDRI

## INSTITUTE OF ENGINEERING & TECHNOLOGY

(Approved by AICTE, New Delhi, Affiliated to JNTUK, Kakinada, Accredited BY NAAC)


BHOOPALAPATNAM, RAJAMAHENDRAVARAM, E.G. Dist., AP, 533107.

eMail: office@rietrjy.co.in Website: www.rietrjy.co.in Ph: +91 91212 14413



Rajamahendravaram, Andhra Pradesh, India  
 2R3W+79J, Pidimgoyya, Rajamahendravaram, Andhra Pradesh 533107, India  
 Lat 17.003301°  
 Long 81.84599°  
 03/04/24 06:14 PM GMT +05:30

CC FOOTAGE SURVEILANCE SCREEN

  
**PRINCIPAL**  
**PRINCIPAL**  
**RAJAMAHENDRI**  
**INSTITUTE OF ENGINEERING TECHNOLOGY**  
**BHOOPALAPATNAM.**  
 RAJAMAHENDRAVARAM-533 107. E.G. Dist.



# RAJAMAHENDRI

## INSTITUTE OF ENGINEERING & TECHNOLOGY

(Approved by AICTE, New Delhi, Affiliated to JNTUK, Kakinada, Accredited BY NAAC)

BHOOPALAPATNAM, RAJAMAHENDRAVARAM, E.G. Dist., AP, 533107.

eMail: [office@rietrjy.co.in](mailto:office@rietrjy.co.in) Website: [www.rietrjy.co.in](http://www.rietrjy.co.in) Ph: +91 91212 14413



### WASTE WATER RECYCLING

  
PRINCIPAL

PRINCIPAL  
RAJAMAHENDRI  
INSTITUTE OF ENGINEERING TECHNOLOGY  
BHOOPALAPATNAM.  
RAJAMAHENDRAVARAM-533 107. E.G. Dist.



# RAJAMAHENDRI

## INSTITUTE OF ENGINEERING & TECHNOLOGY


(Approved by AICTE, New Delhi, Affiliated to JNTUK, Kakinada, Accredited BY NAAC)

BHOOPALAPATNAM, RAJAMAHENDRAVARAM, E.G. Dist., AP, 533107.

eMail: [office@rietrjy.co.in](mailto:office@rietrjy.co.in) Website: [www.rietrjy.co.in](http://www.rietrjy.co.in) Ph: +91 91212 14413



### RAIN WATER HARVESTING

  
**PRINCIPAL**  
PRINCIPAL  
RAJAMAHENDRI  
INSTITUTE OF ENGINEERING TECHNOLOGY  
BHOOPALAPATNAM,  
RAJAMAHENDRAVARAM-533 107. E.G. Dist.



# RAJAMAHENDRI

## INSTITUTE OF ENGINEERING & TECHNOLOGY

(Approved by AICTE, New Delhi, Affiliated to JNTUK, Kakinada, Accredited BY NAAC)  
BHOOPALAPATNAM, RAJAMAHENDRAVARAM, E.G. Dist., AP, 533107.  
eMail: [office@rietry.co.in](mailto:office@rietry.co.in) Website: [www.rietry.co.in](http://www.rietry.co.in) Ph: +91 91212 14413



FIRE EXTINGUISHER

  
PRINCIPAL  
PRINCIPAL  
RAJAMAHENDRI  
INSTITUTE OF ENGINEERING TECHNOLOGY  
BHOOPALAPATNAM.  
RAJAMAHENDRAVARAM-533 107. E.G. Dist



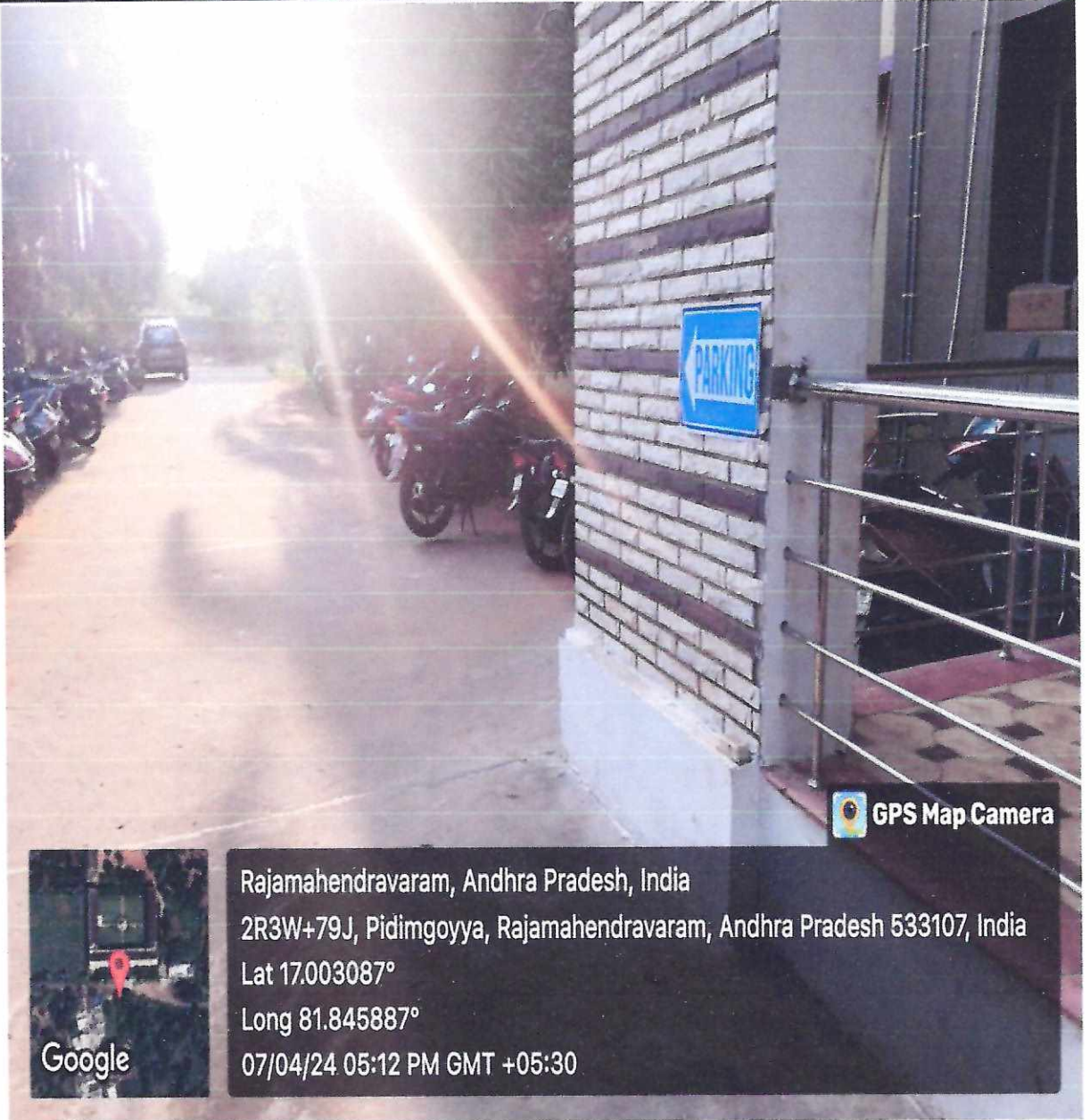


# RAJAMAHENDRI INSTITUTE OF ENGINEERING & TECHNOLOGY

(Approved by AICTE, New Delhi, Affiliated to JNTUK, Kakinada, Accredited BY NAAC)

BHOOPALAPATNAM, RAJAMAHENDRAVARAM, E.G. Dist., AP, 533107.

eMail: [office@rietry.co.in](mailto:office@rietry.co.in) Website: [www.rietry.co.in](http://www.rietry.co.in) Ph: +91 91212 14413



Rajamahendravaram, Andhra Pradesh, India

2R3W+79J, Pidimgoyya, Rajamahendravaram, Andhra Pradesh 533107, India

Lat 17.003087°

Long 81.845887°

07/04/24 05:12 PM GMT +05:30

PARKING

  
PRINCIPAL  
PRINCIPAL  
RAJAMAHENDRI  
INSTITUTE OF ENGINEERING TECHNOLOGY  
BHOOPALAPATNAM.  
RAJAMAHENDRAVARAM-533 107. E.G. Dist



# RAJAMAHENDRI INSTITUTE OF ENGINEERING & TECHNOLOGY

(Approved by AICTE, New Delhi, Affiliated to JNTUK, Kakinada, Accredited BY NAAC)

BHOOPALAPATNAM, RAJAMAHENDRAVARAM, E.G. Dist., AP, 533107.

eMail: [office@rietrjy.co.in](mailto:office@rietrjy.co.in) Website: [www.rietrjy.co.in](http://www.rietrjy.co.in) Ph: +91 91212 14413



USE DUSTBINS

  
PRINCIPAL  
**RAJAMAHENDRI**  
INSTITUTE OF ENGINEERING TECHNOLOGY  
BHOOPALAPATNAM.  
RAJAMAHENDRAVARAM-533 107. E.G.Dist.



# RAJAMAHENDRI INSTITUTE OF ENGINEERING & TECHNOLOGY

(Approved by AICTE, New Delhi, Affiliated to JNTUK, Kakinada, Accredited BY NAAC)  
BHOOPALAPATNAM, RAJAMAHENDRAVARAM, E.G. Dist., AP, 533107.  
eMail: [office@rietrjy.co.in](mailto:office@rietrjy.co.in) Website: [www.rietrjy.co.in](http://www.rietrjy.co.in) Ph: +91 91212 14413



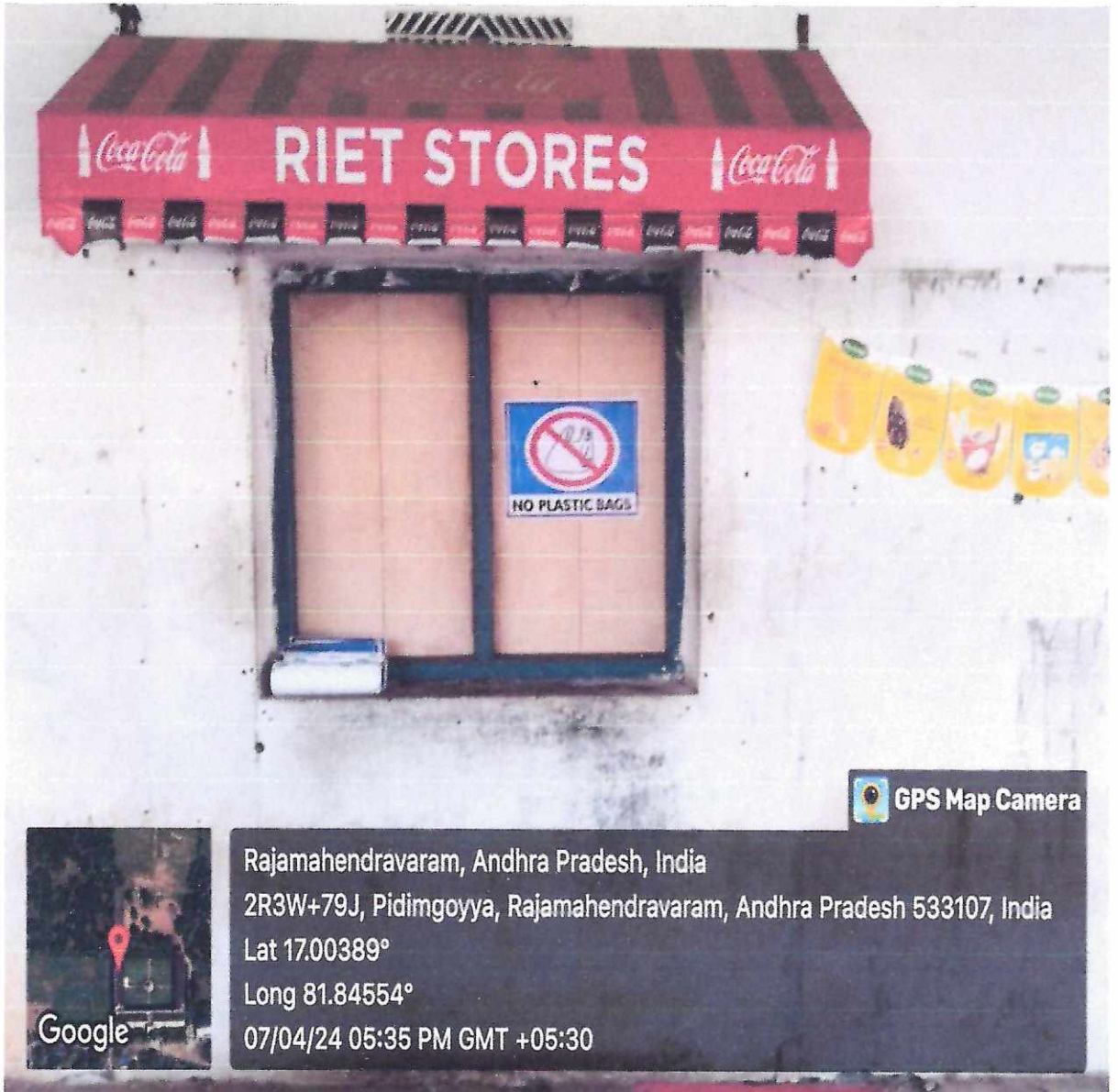
GPS Map Camera




Rajamahendravaram, Andhra Pradesh, India  
2R3W+79J, Pidimgoyya, Rajamahendravaram, Andhra Pradesh 533107, India  
Lat 17.00346°  
Long 81.84606°  
13/04/24 10:59 AM GMT +05:30

DRY WASTE AND WET WASTE DUSTBINS

PRINCIPAL  
PRINCIPAL  
RAJAMAHENDRI  
INSTITUTE OF ENGINEERING TECHNOLOGY  
BHOOPALAPATNAM.  
RAJAMAHENDRAVARAM-533 107. E.G. Dist.



NO PLASTIC USE

  
PRINCIPAL  
PRINCIPAL  
RAJAMAHENDRI  
INSTITUTE OF ENGINEERING TECHNOLOGY  
BHOOPALAPATNAM.  
RAJAMAHENDRAVARAM-533 107. E.G.Dist.



STAFF PARKING

  
**PRINCIPAL**  
PRINCIPAL  
RAJAMAHENDRI  
INSTITUTE OF ENGINEERING TECHNOLOGY  
BHOOPALAPATNAM.  
RAJAMAHENDRAVARAM-533 107. E.G.D



# RAJAMAHENDRI INSTITUTE OF ENGINEERING & TECHNOLOGY

(Approved by AICTE, New Delhi, Affiliated to JNTUK, Kakinada, Accredited BY NAAC)  
BHOOPALAPATNAM, RAJAMAHENDRAVARAM, E.G. Dist., AP, 533107.  
eMail: [office@rietjy.co.in](mailto:office@rietjy.co.in) Website: [www.rietjy.co.in](http://www.rietjy.co.in) Ph: +91 91212 14413

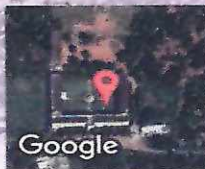


Rajamahendravaram, Andhra Pradesh, India  
2R3W+79J, Pidimgoyya, Rajamahendravaram, Andhra Pradesh 533107, India  
Lat 17.003154°  
Long 81.845962°  
15/04/24 10:25 AM GMT +05:30

GPS Map Camera

RAMP FOR PHC

**PRINCIPAL**  
PRINCIPAL  
RAJAMAHENDRI  
INSTITUTE OF ENGINEERING TECHNOLOGY  
BHOOPALAPATNAM.  
RAJAMAHENDRAVARAM-533 107. E.G.Dist.



Rajamahendravaram, Andhra Pradesh, India  
2R3W+79J, Pidimgoyya, Rajamahendravaram, Andhra Pradesh 533107, India  
Lat 17.003679°  
Long 81.846135°  
15/04/24 10:38 AM GMT +05:30

GPS Map Camera

**MOBILE PHONES STRICTLY PROHIBITED**

**PRINCIPAL**

**PRINCIPAL**  
**RAJAMAHENDRI**  
**INSTITUTE OF ENGINEERING TECHNOLOGY**  
**BHOOPALAPATNAM.**  
RAJAMAHENDRAVARAM-533 107. E.G.Dist.




# RAJAMAHENDRI INSTITUTE OF ENGINEERING & TECHNOLOGY

(Approved by AICTE, New Delhi, Affiliated to JNTUK, Kakinada, Accredited BY NAAC)  
BHOOPALAPATNAM, RAJAMAHENDRAVARAM, E.G. Dist., AP, 533107.  
eMail: [office@rietrijy.co.in](mailto:office@rietrijy.co.in) Website: [www.rietrijy.co.in](http://www.rietrijy.co.in) Ph: +91 91212 14413



Rajamahendravaram, Andhra Pradesh, India  
2R3W+79J, Pidimgoyya, Rajamahendravaram, Andhra Pradesh 533107, India  
Lat 17.003461°  
Long 81.845538°  
15/04/24 11:01 AM GMT +05:30


SOLAR LIGHT

  
**PRINCIPAL**  
**RAJAMAHENDRI**  
INSTITUTE OF ENGINEERING TECHNOLOGY  
BHOOPALAPATNAM.  
RAJAMAHENDRAVARAM-533 107. E.G. Dist.





SOLAR LIGHT

  
**PRINCIPAL**  
**PRINCIPAL**  
**RAJAMAHENDRI**  
INSTITUTE OF ENGINEERING TECHNOLOGY  
BHOOPALAPATNAM.  
RAJAMAHENDRAVARAM-533 107. E.G.Dist.



# RAJAMAHENDRI INSTITUTE OF ENGINEERING & TECHNOLOGY

(Approved by AICTE, New Delhi, Affiliated to JNTUK, Kakinada, Accredited BY NAAC)  
BHOOPALAPATNAM, RAJAMAHENDRAVARAM, E.G. Dist., AP, 533107.  
eMail: [office@rietrjy.co.in](mailto:office@rietrjy.co.in) Website: [www.rietrjy.co.in](http://www.rietrjy.co.in) Ph: +91 91212 14413



Rajamahendravaram, Andhra Pradesh, India  
2R3W+79J, Pidimgoyya, Rajamahendravaram, Andhra Pradesh  
533107, India  
Lat 17.00329°  
Long 81.845619°  
12/04/24 04:32 PM GMT +05:30

GPS Map Camera

## PHC TOILET

  
PRINCIPAL

PRINCIPAL  
RAJAMAHENDRI  
INSTITUTE OF ENGINEERING TECHNOLOGY  
BHOOPALAPATNAM.  
RAJAMAHENDRAVARAM-533 107. E.G. Dist.



# RAJAMAHENDRI INSTITUTE OF ENGINEERING & TECHNOLOGY

(Approved by AICTE, New Delhi, Affiliated to JNTUK, Kakinada, Accredited BY NAAC)

BHOOPALAPATNAM, RAJAMAHENDRAVARAM, E.G. Dist., AP, 533107.

eMail: [office@rietriety.co.in](mailto:office@rietriety.co.in) Website: [www.rietriety.co.in](http://www.rietriety.co.in) Ph: +91 91212 14413



Google

Rajamahendravaram, Andhra Pradesh, India  
2R3W+79J, Pidimgoyya, Rajamahendravaram, Andhra Pradesh 533107, India  
Lat 17.00385°  
Long 81.845857°  
15/04/24 10:43 AM GMT +05:30

GPS Map Camera

**CLEAN AND GREEN CAMPUS**

  
**PRINCIPAL**  
**PRINCIPAL**  
**RAJAMAHENDRI**  
**INSTITUTE OF ENGINEERING TECHNOLOGY**  
**BHOOPALAPATNAM.**  
RAJAMAHENDRAVARAM-533 107. E.G. Dist.